

This is My Library

The Middleborough Public Library



This is MY Library

A personal tour in print

With this book, individuals will gain a visual familiarity of their own library so that they can feel comfortable during their visits, be able to use the services, and interact appropriately. This customizable book was developed using a template from Libraries and Autism (www.librariesandautism.org).

This book is about my library, **Middleborough Public Library**. We come to the library to access information and services. There are books I can read, information I can research, and programs and services in which I can participate.



This is where I park to visit the Library by car.



This is the parking lot across Peirce Street from the Library.

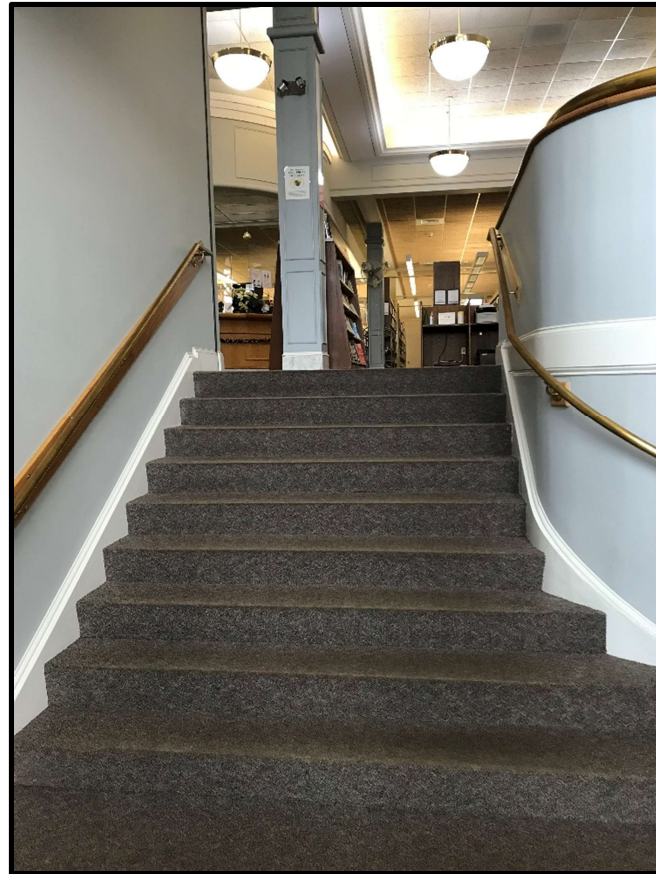
This is the entrance to the Library.



This is the outdoor book return.



These are the stairs that lead to the Main Desk.

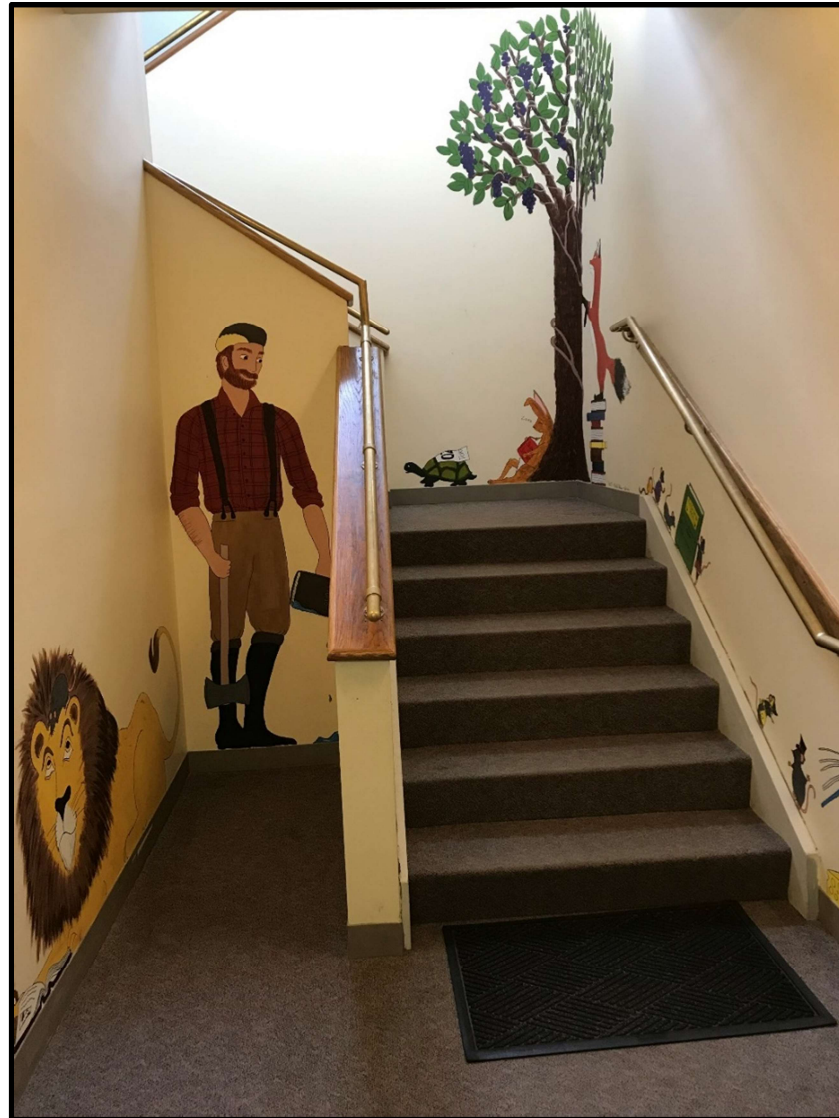


The Main Desk is where I can pick up any items I have on hold. The Library lets me know when these are available.

The Children's Room is located downstairs.



The stairs down to the Children's room are painted with many storybook characters.

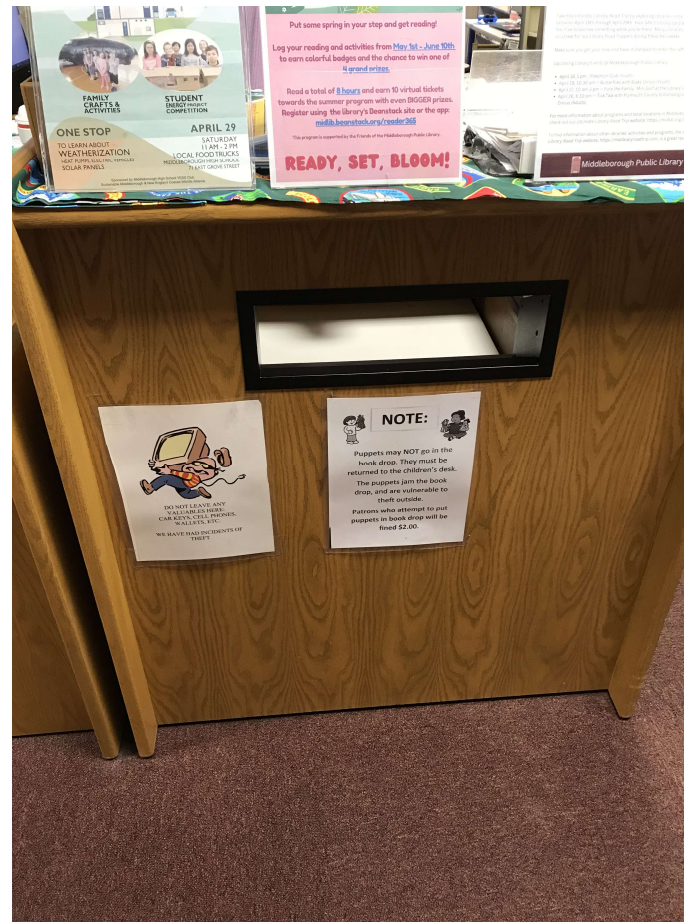


This is the entrance to the Children's room.



There are pegs on the wall where I can hang up my coat.

This is the indoor book return.



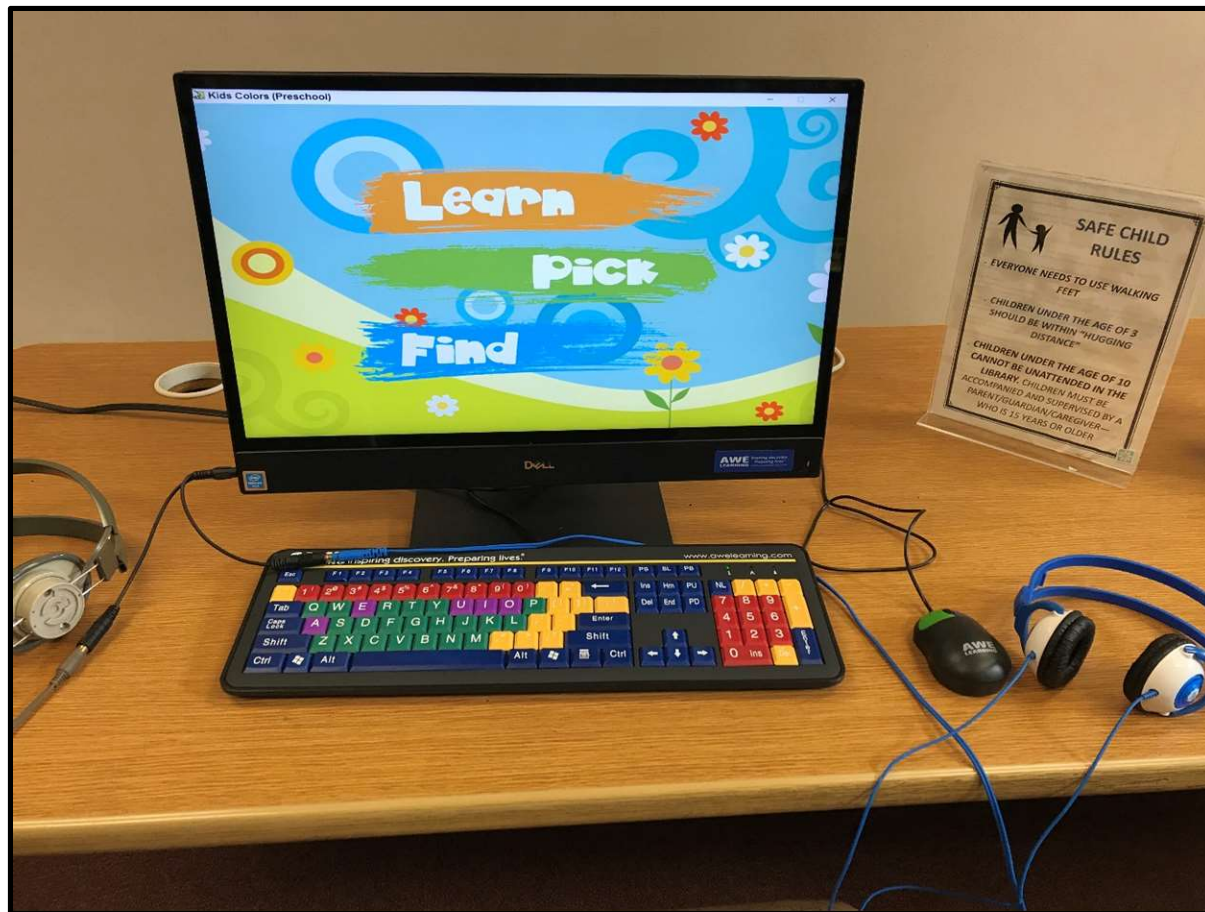
I will hand puppets and large items to the librarian.

There are lots of things to do in the Children's room. I can pick out books and audiobooks.



The Library also has music CDs, movies and magazines that I can read and enjoy.

I can play games on these computers.



I can play with the toys, puzzles or dollhouse.



Right outside is the Nature Playspace where I can build or dig in the sand when it is open.



This is the Funbrary.



I can check out board games, outdoor games, and science kits to take home.

This is the desk where I can ask questions and check out items to take home.



This is the Children's librarian at my library.



The Children's Librarian leads programs like Storytime.
She can help if I have problems at the library.

This is the bathroom in the Children's room.



These are the times I can use my library.

Monday	9 AM - 8 PM
Tuesday	9 AM - 8 PM
Wednesday	9 AM - 8 PM
Thursday	9 AM - 8 PM
Friday	9 AM - 2 PM
Saturday	9 AM - 2 PM

There are specific days and times I can use my library.
The library staff can provide me with a current library schedule.

My library has rules.



I will use walking feet and a quiet voice in the Library.

This is a library card.



Having a library card at my library lets me check out things like books, DVDs, CDs, movies and music. There are rules about getting and using a library card. A librarian can provide me with more information about getting and using my library card.

These are sensory bags.



Sensory supports are available for check out from the Children's desk with my library card.



Library Connections

innovative solutions for the library professional

www.libraryconnections.net
MegandDan@libraryconnections.net

MegandDan@librariesandautism.org

Dan Weiss
Director, Fanwood Memorial Library
14 Tillotson Rd.
Fanwood, NJ 07023
Phone: 908.322.6400
www.fanwoodlibrary.org

Meg Kolaya
Director, Scotch Plains Public Library
1927 Bartle Ave.
Scotch Plains, NJ 07076
Phone: 908.322.5007
www.ScotLib.org

Designed by Adrienne Robertiello
Meg Kolaya & Dan Weiss
Copyright © 2008

www.librariesandautism.org